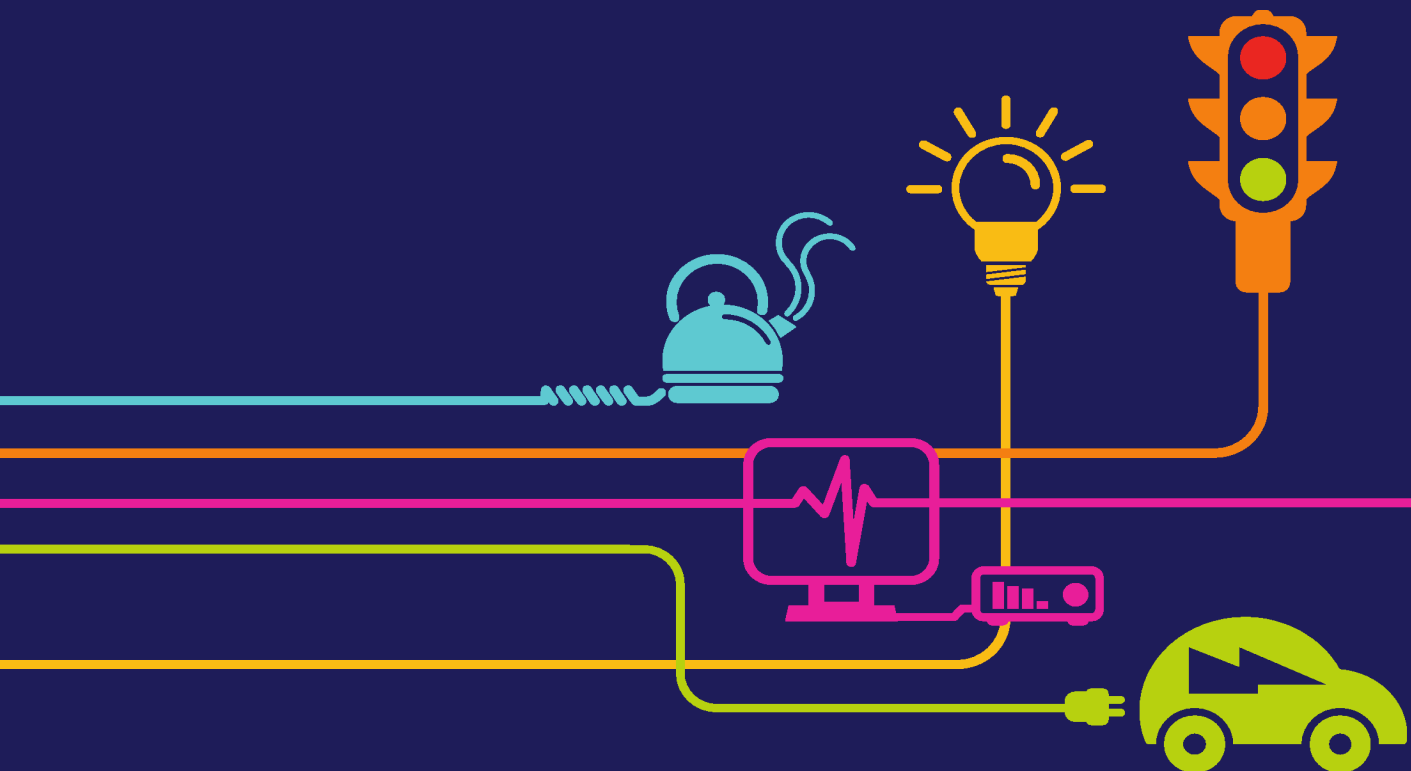


# Navigation Document

National Grid (North Wales Connection Project)

*Regulation 5(2)(a) of the Infrastructure Planning  
(Applications: Prescribed Forms and Procedure) Regulations 2009*





# Table of Contents

<b>INTRODUCTION</b>	<b>3</b>
The applicant and an overview of the North Wales Connection Project .....	3
The purpose of this document .....	4
Document numbering explained .....	4
<b>TABLE OF APPLICATION DOCUMENTS</b>	<b>5</b>
Documentation .....	5
<b>VOLUME 1: APPLICATION INFORMATION</b>	<b>8</b>
Introduction .....	8
Volume Contents .....	8
<b>VOLUME 2: DRAFT DEVELOPMENT CONSENT ORDER</b>	<b>9</b>
Introduction .....	9
Volume Contents .....	9
<b>VOLUME 3: COMPULSORY ACQUISITION INFORMATION</b>	<b>10</b>
Introduction .....	10
Volume Contents .....	10
<b>VOLUME 4: PLANS</b>	<b>11</b>
Introduction .....	11
Volume Contents .....	11
<b>VOLUME 5: ENVIRONMENTAL INFORMATION</b>	<b>14</b>
Introduction .....	14
Volume Contents .....	14
<b>VOLUME 6: CONSULTATION REPORT</b>	<b>16</b>
Introduction .....	16
Volume Contents .....	16
<b>VOLUME 7: OTHER REPORTS</b>	<b>16</b>
Introduction .....	16
Volume Contents .....	16
<b>VOLUME 8: WELSH TRANSLATIONS</b>	<b>18</b>
Introduction .....	18
Volume Contents .....	18
<b>VOLUME 9: REFERENCE DOCUMENTS</b>	<b>19</b>
Introduction .....	19
Volume Contents .....	19



# Introduction

## The applicant and an overview of the North Wales Connection Project

At National Grid, our job is to connect people to the energy they use, whether to heat and light homes, or to keep factories and offices running. As old power stations close new sources of energy need to be connected to our network, so that electricity continues to be available at the flick of a switch.

One of these new sources of energy is the proposed Wylfa Newydd nuclear power station on Anglesey. In order to transport the energy from Wylfa Newydd around the UK, National Grid needs to connect it to the high-voltage electricity network.

The existing electricity network on Anglesey and in north Gwynedd is not sufficient to carry the proposed energy generation so National Grid needs to build a new connection between Wylfa and Pentir in Gwynedd. This is in addition to an existing overhead line on Anglesey. This new infrastructure project is known as the North Wales Connection Project.

The Proposed Development consists of:

- Modifications to the existing substation at Wylfa;
- Sections of new 400 kV overhead line (OHL) between Wylfa substation and Braint Tunnel Head House (THH) and Cable Sealing End Compound (CSEC) on Anglesey including modifications to parts of the existing 400 kV OHL between Wylfa and Pentir;
- Braint THH/CSEC on Anglesey;
- A tunnel between Braint and Tŷ Fodol THHs;
- Tŷ Fodol THH/CSEC in Gwynedd;
- New section of OHL connection between Tŷ Fodol THH/CSEC and Pentir Substation;
- Extension to the existing substation at Pentir; and
- Temporary construction compounds, access tracks, construction working areas, localised widening of the public highway and third party works that are required to construct the infrastructure listed above.

National Grid has prepared a series of plans and reports to explain our proposals. Our application has been submitted under the Planning Act 2008 (known as a Development Consent Order (DCO) application) which has been submitted to the Planning Inspectorate for review.

## The purpose of this document

This document provides a summary of the reports and plans in our application. The documents and reports that make up the application have been split into nine volumes listed in Table 1.1.

Table 1.1 – Application Volumes

Volume	This volume...
1. Application Information	provides details of the specific application information required by the Planning Inspectorate
2. Draft Development Consent Order	outlines the legal powers we are seeking in order to build the proposed connection
3. Compulsory Acquisition Information	provides evidence of why we may require legal powers
4. Plans	plans showing where we propose to undertake the work
5. Environmental Information	our assessment of the potential impact on the environment
6. Consultation Report	details of the pre-application consultation that we have undertaken on the project
7. Other Reports	additional documents produced for the application
8. Welsh Translation	provides a translation of key documents or summaries of the documents in Welsh
9. Reference Documents	includes documents from earlier stages of the project that are referenced elsewhere in our application.

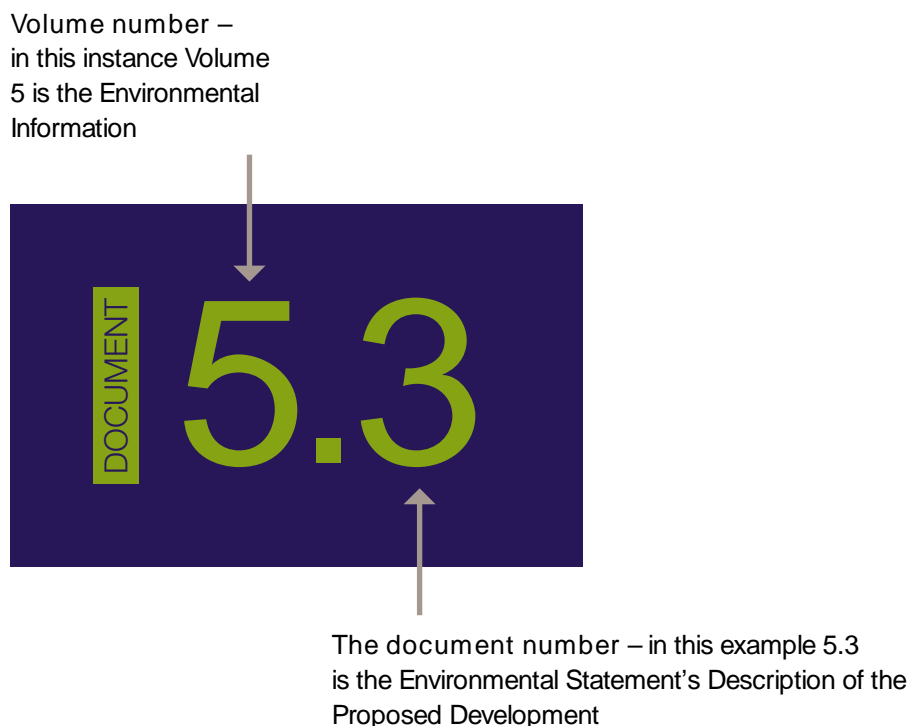
To access the documents visit the Planning Inspectorate website:

<https://infrastructure.planninginspectorate.gov.uk/projects/wales/north-wales-connection/>

## Document numbering explained

The documents submitted as part of the application follow a consistent numbering format i.e 1.1, 1.2, 4.1, 4.2 etc. Figure 1.1 shows how to understand the document numbering

Table 1.1 – Document Numbering



# Table of Application Documents

## Documentation

Below is the list of the volumes and documents that have been submitted as part of National Grid's DCO application (under the Planning Act 2008).

### Volume 1: Application information

- 1.1 Navigation Document
- 1.2 Application Letter and s55 Acceptance of Applications Checklist
- 1.3 Application Form
- 1.4 Glossary
- 1.5 Guide to the Application

### Volume 2: Draft Development Consent Order

- 2.1 Draft Development Consent Order
- 2.2 Draft Explanatory Memorandum

### Volume 3: Compulsory Acquisition Information

- 3.1 Statement of Reasons
- 3.2 Funding Statement
- 3.3 Book of Reference

### Volume 4: Plans

- 4.0.1 Overall Location Plan
- 4.0.2 Master Key Plans
- 4.1 Land Affected Plans
- 4.2 Land Plans
- 4.3 Special Category Land Plans and Crown Land Plans
- 4.4 Work Plans
- 4.5 Access and Rights of Way Plans
- 4.6 Other Environmental Features Plan
- 4.7 Statutory or Non-Statutory Sites or Features of Nature Conservation, Habitats and Water Bodies Plans
- 4.8 Habitats and Protected Species, Important Habitats or Other Diversity Features
- 4.9 CONFIDENTIAL: Habitats of Protected Species: Location of Badger Setts Plans
- 4.10 Statutory or Non-Statutory Sites or Features of the Historic Environment Plan
- 4.11 Trees and Hedgerows Potentially Affected Plans
- 4.12 Traffic Regulation Order Plans
- 4.13 Design Drawings
- 4.14 Plans Guidance Document

## Volume 5: Environmental Information

- 5.0 Environmental Statement – Non-Technical Summary
- 5.1 Chapter 1: Introduction
- 5.2 Chapter 2: Alternatives, Project History and Non-Statutory Consultation
- 5.3 Chapter 3: Description of the Proposed Development
- 5.4 Chapter 4: Construction, Operation, Maintenance and Decommissioning
- 5.5 Chapter 5: EIA Consultation
- 5.6 Chapter 6: EIA Methodology and Basis of Assessment
- 5.7 Chapter 7: Landscape Assessment
- 5.8 Chapter 8: Visual Assessment
- 5.9 Chapter 9: Ecology and Nature Conservation
- 5.10 Chapter 10: Historic Environment
- 5.11 Chapter 11: Geology, Hydrogeology and Ground Conditions
- 5.12 Chapter 12: Water Quality, Resources and Flood Risk
- 5.13 Chapter 13: Traffic and Transport
- 5.14 Chapter 14: Air Quality and Emissions
- 5.15 Chapter 15: Construction Noise
- 5.16 Chapter 16: Operational Noise and Vibration
- 5.17 Chapter 17: Socio-Economics
- 5.18 Chapter 18: Agriculture
- 5.19 Chapter 19: Intra-Project Effects
- 5.20 Chapter 20: Inter-Project Effects
- 5.21 Chapter 21: Statement of the Combined Effects with the Wider Works
- 5.22 Summary of Residual Effects
- 5.23 Habitat Regulations Assessment Report
- 5.24 Statement of Statutory Nuisance
- 5.25 Electric and Magnetic Fields Report
- 5.26 Welsh Language Impact Assessment
- 5.27 Wellbeing Assessment
- 5.28 Schedule of Mitigation
- 5.29 Photomontages
- 5.30 Arboricultural Assessment

## Volume 6: Consultation Report

- 6.1 Consultation Report
- 6.2 Consultation Report Appendices



## Volume 7: Other Reports

- 7.1 Need Case
- 7.2 Strategic Options Report
- 7.3 History of the Project
- 7.4 Construction Environmental Management Plan
- 7.5 Outline Construction Traffic Management Plan
- 7.6 Public Rights of Way Management Plan
- 7.7 Biodiversity Mitigation Strategy
- 7.8 Archaeological Strategy
- 7.9 Noise and Vibration Management Plan
- 7.10 Outline Soil Management Plan
- 7.11 Outline Waste Management Plan
- 7.12 Outline Materials Management Plan
- 7.13 Enhancement Strategy
- 7.14 Planning Statement
- 7.15 Details of Other Consents and Licences
- 7.16 Design and Access Statement
- 7.17 Design Report
- 7.18 Back Check of Wylfa-Pentir Design Decisions
- 7.19 Design Guide

## Volume 8: Welsh Translations

- 8.1 Dogfen Lywio
- 8.2 Memorandwm Esboniadol Drafft
- 8.3 Datganiad o Resymau
- 8.4 Datganiad Cyllido
- 8.5 Dogfen Ganllawiau'r Cynlluniau
- 8.6 Datganiad Amgylcheddol – Crynodeb Annhechnegol
- 8.7 Asesiad o'r Effaith ar yr Iaith Gymraeg
- 8.8 Crynodeb o'r Adroddiad Ymgynghori
- 8.9 Crynodeb o'r Datganiad Cynllunio
- 8.10 Crynodeb o'r Adroddiad Dylunio
- 8.11 Hanes y Prosiect

## Volume 9: Reference Documents

- 9.1 Wylfa to Pentir Overhead Electricity Transmission Line – Route Corridor Identification Report (Oct 2012)
- 9.2 Wylfa to Pentir Preferred Route Corridor Selection Report (Oct 2015)
- 9.3 Wylfa to Pentir Route Options Report (Oct 2015)
- 9.4 Preferred Route Option Selection Report Wylfa to the Menai Crossing Area (Sep 2016)
- 9.5 Draft Route Alignment Report Wylfa to the Menai Crossing Area (Sep 2016)
- 9.6 Menai Strait Crossing Report (Sep 2016)
- 9.7 Historic Need Case (2012, 2015 and 2016)
- 9.8 Historic Strategic Options Report (2012, 2015 and 2016)

# Volume 1: Application Information

## Introduction

This volume provides details of the application information required by the Planning Inspectorate when submitting an application and how to navigate the documentation.

The documents contained within this volume are shown below.

## Volume Contents

- 1.1 Navigation Document (this document) – provides a description of all documents and reports contained within the application. Please see Document 8.1 for a Welsh version of this document.
- 1.2 Application Letter and s55 Acceptance of Applications Checklist – covering letter for the application. This is accompanied by a s55 checklist.
- 1.3 Application Form – provides the formal application form for the proposed development and lists documents included.
- 1.4 Glossary – provides an explanation of the technical terminology used in all documents.
- 1.5 Guide to the Application – a list of National Grid’s North Wales Connection Project Development Consent Order application documents which highlights the most up to date versions.

## Volume 2: Draft Development Consent Order

### Introduction

In order to build the proposed connection, National Grid needs consent from the Government. These documents outline the legal powers National Grid is seeking.

The documents contained within this volume are shown below.

### Volume Contents

- 2.1 Draft Development Consent Order – contains a list of all the work we propose to do and what we will do if consent is granted.
- 2.2 Draft Explanatory Memorandum – explains the Draft Development Consent Order. Please see Document 8.2 for a Welsh version of this document.

## Volume 3: Compulsory Acquisition Information

### Introduction

In order to build the proposed connection, National Grid may need to use legal powers of compulsory acquisition. These documents outline the legal powers it is seeking.

The documents contained within this volume are shown below.

### Volume Contents

- 3.1 Statement of Reasons – provides an explanation of why National Grid may require legal powers to compulsory purchase land to build the connection. Please see Document 8.3 for a Welsh version of this document.
- 3.2 Funding Statement – explains how the development, including any compulsory purchase acquisition, is proposed to be funded. Please see Document 8.4 for a Welsh version of this document.
- 3.3 Book of Reference – identifies everyone who has a legal interest in the land affected by National Grid's proposals. The Book of Reference (BoR) should be read in conjunction with the Land Plans (Volume 4, Document 4.2) which identifies the location of each plot of land.

## Volume 4: Plans

### Introduction

This volume contains the plans that show where and how National Grid proposes to undertake its work. The plans are split into geographical sections which will help you to identify the plan that you want to view. The different sections are outlined below:

Section A – Wylfa to Rhosgoch

Section B – Rhosgoch to Llandyfrydog

Section C – Llandyfrydog to B5110 north of Talwrn

Section D – B5110 north of Talwrn to Ceint

Section E – Ceint to the Afon Braint

Section F – Afon Braint to Pentir

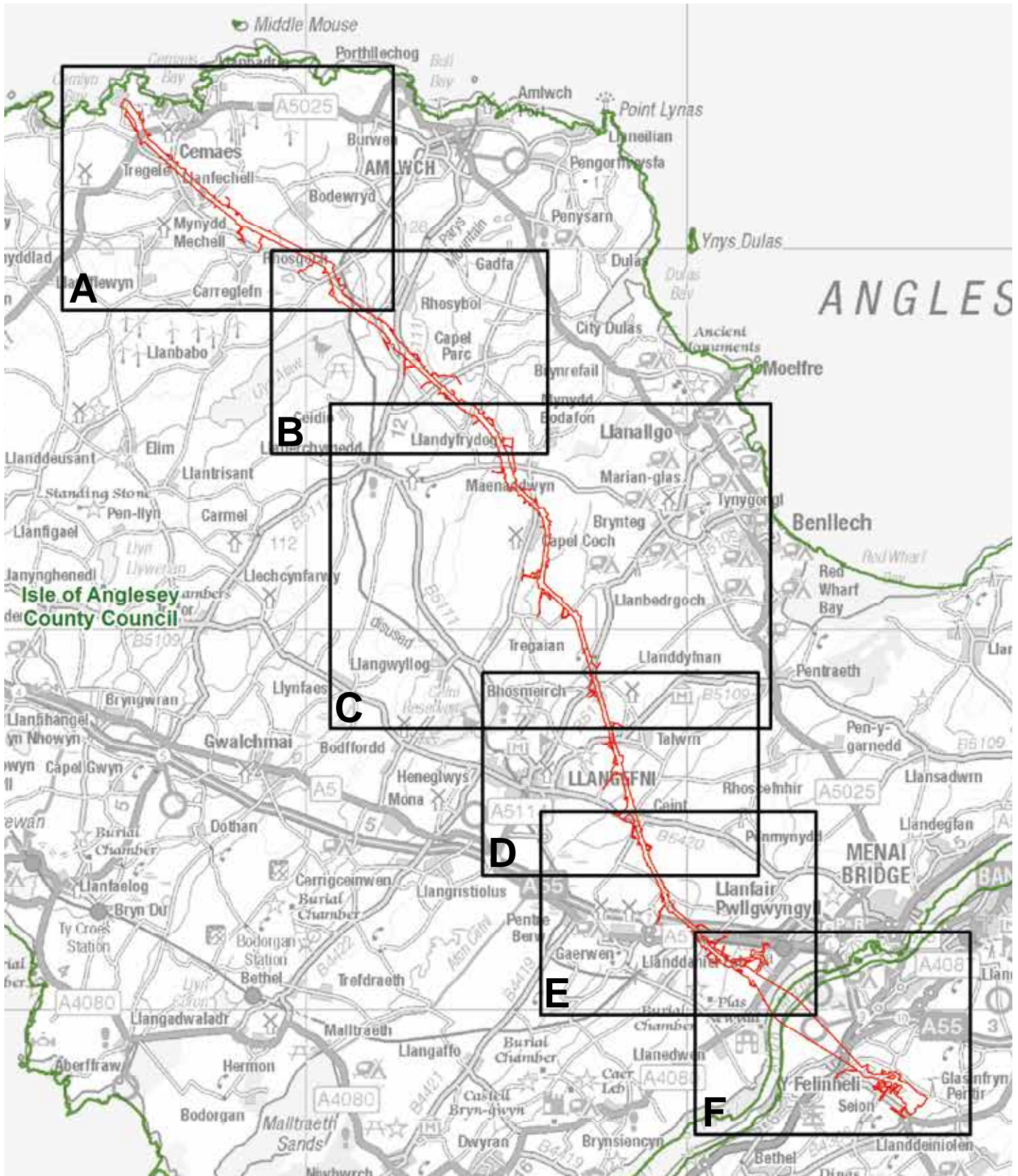
A map outlining the geographical sections is available on page 13. Each of these sections contains a series of maps (or sheets). The number of sheets in a section depends on its geographical size and whether that section is affected by that plan series. A key plan showing the location of each section, and the sheets within it, are contained within each set of plans. Symbols used on each plan type are shown on the legend and also shown within the Plans Guidance document (Volume 4, Document 4.14).

The documents contained within this volume are shown below.

### Volume Contents

- 4.0.1 Overall Location Plan – the whole proposed route from Wylfa to Pentir.
- 4.0.2 Master Key Plans – this shows the geographical sections which will help you to identify the plan that you want to view.
- 4.1 Land Affected Plans – shows the boundaries of all land affected, within which National Grid proposes to build the connection.
- 4.2 Lands Plans – shows the boundary within which National Grid proposes to build the connection and the powers or rights to be exercised over the land.
- 4.3 Special Category Land Plans and Crown Land Plans – show the boundary within which National Grid proposes to build the connection and any special category land, such as common land, Crown Land or land owned by special bodies such as the National Trust. Not all parts of the proposed route have Special Category Land and Crown Land plans.
- 4.4 Works Plans – show the proposed limits of National Grid's DCO, the route of the development in each section and the distance either side of the proposed route where work may be carried out, known as the 'limits of deviation'.
- 4.5 Access and Rights of Way Plans – show any changes proposed to public roads, footpaths, bridleways and rights of navigation and access to these.
- 4.6 Other Environmental Features Plans
- 4.7 Statutory or Non-Statutory Site or Features of Nature Conservation, Habitats and Water Bodies Plans – show locations that are of particular environmental importance, including areas that are important for the protection of nature or are protected habitats.
- 4.8 Habitats of Protected Species, Important Habitats or Other Diversity Features – show locations of protected species' habitats.
- 4.9 CONFIDENTIAL: Habitats of Protected Species: Location of Badger Setts Plans – show the location of protected species and badger setts. Due to the legal status of protected species and badger setts these plans will not be made publicly available.

- 4.10 Statutory or Non-Statutory Sites or Features of the Historic Environment Plan – show locations of archaeological sites, scheduled monuments, historic buildings and other historic aspects of the landscape.
- 4.11 Trees and Hedgerows Potentially Affected Plans – show trees and hedges that National Grid may affect during construction of the proposed connection.
- 4.12 Traffic Regulation Order Plans – show the proposed traffic management National Grid would implement during the construction of the proposed connection.
- 4.13 Design Drawings – provide details of the size and height of the proposed new infrastructure, including overheads lines, substation and cable sealing end compounds.
- 4.14 Plans Guidance document – this document provides additional information on what the plans show and include a Welsh to English translation of the legends used. Please see Document 8.5 for a Welsh version of this document.



## Volume 5: Environmental Information

### Introduction

National Grid tries to balance the need to build equipment with consideration for the environment.

To understand this balance it has completed an Environmental Impact Assessment (EIA) to consider the likely effects of the proposed development on the environment. The Environmental Statement (ES) provides the results of the EIA.

A number of standalone reports (5.22 to 5.30) are also contained in this volume.

The documents contained within this volume are shown below.

### Volume Contents

- 5.0 Environmental Statement – Non -Technical Summary. Please see document 8.6 for a Welsh version of this document.
- 5.1 Chapter 1: Introduction – an introduction to the ES.
- 5.2 Chapter 2: Alternatives, Project History and Non-Statutory Consultation – details on the connection options for the project, connection options considered, routes considered and design changes that have been made.
- 5.3 Chapter 3: Description of the Proposed Development – the description of the proposed development referred to throughout the ES.
- 5.4 Chapter 4: Construction, Operation, Maintenance and Decommissioning – provides information about how the Proposed Development would be constructed, how it would operate, any maintenance that may routinely be required and, if necessary, how it would be decommissioned if the connection were no longer needed.
- 5.5 Chapter 5: EIA Consultation – summarises the consultation which has been undertaken to inform the Proposed Development, both statutory and non-statutory, and describes in more detail consultation which has been relevant to the Environmental Impact Assessment (EIA) process.
- 5.6 Chapter 6: EIA Methodology and Basis of Assessment – outlines the approach and methodology adopted in the preparation of the Environmental Impact Assessment.
- 5.7 Chapter 7: Landscape Assessment – assessment of the features and characteristics that shape the landscape.
- 5.8 Chapter 8: Visual Assessment – assessment of important viewpoints.
- 5.9 Chapter 9: Ecology & Nature Conservation – assessment of ecology and areas specially protected for nature conservation.
- 5.10 Chapter 10: Historic Environment – assessment of archaeological remains, historic buildings and other aspects of the landscape.
- 5.11 Chapter 11: Geology, Hydrogeology and Ground Conditions – assessment of soils, geology and ground contamination.
- 5.12 Chapter 12: Water Quality, Resources and Flood Risk – assessment of the risk of flooding and water quality.
- 5.13 Chapter 13: Traffic and Transport – assessment of the transport network, such as roads, public rights of way, footpaths, bridleways, byways, railways and cycle routes.
- 5.14 Chapter 14: Air Quality – assessment of air quality, for example dust from earthworks or gases from vehicle exhausts during construction.
- 5.15 Chapter 15: Construction Noise and Vibration – assessment of noise levels as we construct the overhead line.
- 5.16 Chapter 16: Operational Noise – assessment of noise levels during operation of the new overhead line.



- 5.17 Chapter 17: Socio-economics – assessment of socio-economic features during construction and operation.
- 5.18 Chapter 18: Agriculture – presents information about the potential effects that could result from the Proposed Development in relation to agricultural land use and soils.
- 5.19 Chapter 19: Intra-Project Effects – an assessment of the intra-project cumulative effects that could result from the Proposed Development. These effects could occur where a single receptor is affected by more than one type of effect arising from different aspects of the Proposed Development.
- 5.20 Chapter 20: Inter-Project Effects – an assessment of the inter-project cumulative effects that could result from the Proposed Development. These effects could occur when two or more planned developments have an effect on the same receptor leading to an overall effect of greater significance.
- 5.21 Chapter 21: Statement of the Combined Effects with the Wider Works – presents an assessment of any combined effects that could result from the Proposed Development and the work that is required to strengthen National Grid's existing electricity network between Pentir and Trawsfynydd.
- 5.22 Summary of Residual Effects – presents a summary of the residual environmental effects that are likely to result from the implementation of the Proposed Development.
- 5.23 Habitat Regulations Assessment Report – produced to inform the Habitat Regulations Assessment (HRA) process for the Proposed Development.
- 5.24 Statement of Statutory Nuisance – describes the relevant nuisances defined in the Environmental Protection Act 1990, as a result of the proposed development.
- 5.25 Electric and Magnetic Fields Report – assessment of electric and magnetic fields that will be created by the new connection.
- 5.26 Welsh Language Impact Assessment – assessment of the potential effects the Project and its construction may have on Welsh language across the Project area. Please see document 8.7 for a Welsh version of this document.
- 5.27 Wellbeing Assessment – presents the findings and conclusions from the Environmental Statement and other Development Consent Order documents in relation to the different aspects of wellbeing that have been defined by using the potential effects identified by stakeholders at a wellbeing workshop and the Welsh Wellbeing Goals.
- 5.28 Schedule of Mitigation – provides a summary of the measures proposed to mitigate potential environmental effects identified in the Environmental Statement that are likely to result from the construction, operation, maintenance and decommissioning of Proposed Development and identifies where within the Development Consent Order the mitigation is secured.
- 5.29 Photomontages – Photomontages show the Proposed Development in the context of the baseline, including colour, texture and lighting conditions. They are computer-generated and the objective of a photomontage is to simulate the likely visual changes that would result from the Proposed Development and to produce printed images of a size and resolution sufficient to match the perspective in the same view as in the field. Photomontages do not form the basis of the assessment but are illustrative.
- 5.30 Arboricultural Assessment – presents information about the arboricultural impacts that could result from the construction, operation, maintenance and decommissioning of the Proposed Development and identifies mitigation measures that are necessary to prevent, reduce or offset any likely significant adverse effects of the Proposed Development.

## Volume 6: Consultation Report

### Introduction

This volume contains the Consultation Report for the project.

The documents contained within this volume are shown below.

### Volume Contents

- 6.1 Consultation Report – provides an account of the pre-application consultation undertaken on the Project, including statutory consultation under sections 42, 47 and 48 of the Planning Act 2008. The document also includes a summary of the relevant responses received as part of the pre-application consultation, and how these have been taken into account in the final proposals. Due to the size of the document this has been split into three parts. A summary of this report in Welsh is available in Document 8.8.
- 6.2 Consultation Report Appendices – supporting documents for the Consultation Report.

## Volume 7: Other Reports

### Introduction

This volume includes additional documents that National Grid has produced for the application submission.

The documents contained within this volume are shown below.

### Volume Contents

- 7.1 Need case – explains why the Project is needed.
- 7.2 Strategic Options Report – explains the process of developing and assessing strategic options which led to National Grid's proposals.
- 7.3 History of the Project – narrative of the Project from beginning to end. Please see Document 8.11 for a Welsh version of this document.
- 7.4 Construction Environmental Management Plan – describes how the local environment will be managed during construction including proposals for any reinstatement works following completion.
- 7.5 Outline Construction Traffic Management Plan – details how National Grid will manage construction traffic throughout the building process.
- 7.6 Public Rights of Way Management Plan – outlines how any impacts on public rights of way will be managed during construction.
- 7.7 Biodiversity Mitigation Strategy – outlines how any impacts on biodiversity will be reduced or managed during and after construction.
- 7.8 Archaeological Strategy – outlines how many impacts on archaeological sites will be reduced or managed during and after construction.

- 7.9 Noise and Vibration Management Plan – outlines how any noise or vibration associated with construction works will be managed.
- 7.10 Outline Soil Management Plan – sets out the principles and procedures for general good practice mitigation for the handling, storage and restoration of soil.
- 7.11 Outline Waste Management Plan – provides an overview of how waste produced as part of construction will be managed.
- 7.12 Outline Materials Management Plan – details how National Grid will manage the materials used for construction of the new connection, including an overhead line, tunnel and access roads.
- 7.13 Enhancement Strategy – outlines the enhancement opportunities that have been identified and are proposed.
- 7.14 Planning Statement – outlines the relevant local and national planning policies relating to the application. A summary of this report in Welsh is available in Document 8.9.
- 7.15 Details of other Consents and Licences – lists and briefly describes any other consents, Licences and permits that the Proposed Development might need to enable it to be constructed and operated (including those already applied for).
- 7.16 Design and Access Statement – explains how the project has a suitable design in relation to its setting and describes how building etc will be made accessible (or not).
- 7.17 Design Report – provides a summary of the design evolution of the North Wales Connection Project including the choice of Strategic Option, Route Corridor selection and Route Option selection. It also provides a section-by-section summary of the Proposed Development and outlines the rationale behind key design changes that have been made between the design consulted upon during the statutory consultation in 2016 and the design of the Proposed Development. A summary of this report in Welsh is available in Document 8.10.
- 7.18 Back Check of Wylfa-Pentir Design Decisions – summarises the work undertaken to review and confirm the main design decisions taken at earlier stages of the North Wales Connection project, including: the selection of route corridors and alignments; the location of permanent sites; and technology choices.
- 7.19 Design Guide – sets out design considerations and key design principles that would be applied to the final design of the Tunnel Head House buildings and associated compounds. It also summarises the design rationale for the extension to Pentir Substation.

## Volume 8: Welsh translations

### Introduction

This volume includes documents that National Grid has translated for the application submission.

The documents contained within this volume are shown below.

### Volume Contents

- 8.1 Dogfen Lywio – provides a description of all documents and reports contained within the application. Please see Document 1.1 for an English version of this document.
- 8.2 Memorandwm Esboniadol Drafft – explains the Draft Development Consent Order. Please see Document 2.2 for an English version of this document.
- 8.3 Datganiad o Resymau – provides an explanation of why National Grid may require legal powers to compulsory purchase land to build the connection. Please see Document 3.1 for an English version of this document.
- 8.4 Datganiad Cyllido – explains how the development, including any compulsory purchase acquisition, is proposed to be funded. Please see Document 3.2 for an English version of this document.
- 8.5 Dogfen Ganllawiau'r Cynlluniau – this document provides additional information on what the plans show and include a Welsh to English translation of the legends used. Please see Document 4.14 for an English version of this document.
- 8.6 Datganiad Amgylcheddol – Non-Technical Summary. Please see Document 5.0 for an English version of this document.
- 8.7 Asesiad o'r Effaith ar yr Iaith Gymraeg – assessment of the potential effects the Project and its construction may have on Welsh language across the Project area. Please see Document 5.27 for an English version of this document.
- 8.8 Crynodeb o'r Adroddiad Ymgynghori – Please see Document 6.1 for the Consultation Report (English only).
- 8.9 Crynodeb o'r Datganiad Cynllunio – presents a short summary outlining the key points within the Planning Statement. Please see Document 7.14 for the Planning Statement (English only).
- 8.10 Crynodeb o'r Adroddiad Dylunio – a short summary outlining the key points within the Design Report. Please see Document 7.17 for the Design Report (English only).
- 8.11 Hanes y Prosiect – narrative of the Project from beginning to end. Please see Document 7.3 for an English version of this document.

## Volume 9: Reference Documents

### Introduction

This volume includes documents from earlier stages of the project that are referenced elsewhere in our application.

The documents contained within this volume are shown below.

### Volume Contents

- 9.1 Wylfa to Pentir Overhead Electricity Transmission Line – Route Corridor Identification Report (Oct 2012) – examines and identifies the preliminary potential overhead route corridors between Wylfa and Pentir.
- 9.2 Wylfa to Pentir Preferred Route Corridor Selection Report (Oct 2015) – provides more information about how we made our route corridor decision.
- 9.3 Wylfa to Pentir Route Options Report (Oct 2015) – explains how we have identified the route options for the new connection.
- 9.4 Preferred Route Option Selection Report Wylfa to the Menai Crossing Area (Sep 2016) – explains the reasons for selecting the preferred route option between Wylfa and the Menai Crossing Area.
- 9.5 Draft Route Alignment Report Wylfa to the Menai Crossing Area (Sep 2016) – explains the rationale for the design of the proposed new overhead line between Wylfa and the Menai Crossing Area.
- 9.6 Menai Strait Crossing Report (Sep 2016) – explains the options considered for crossing the Menai Strait, the options assessment undertaken and the selection of the preferred option.
- 9.7 Historic Need Case (2012, 2015 and 2016) – copies of previous Need Cases produced for the project that explain why the Project is needed.
- 9.8 Historic Strategic Options Report (2012, 2015 and 2016 update only) – copies of previous Strategic Options Reports produced for the project that explain the process of developing and assessing strategic options.

## Contact us:

---

There are lots of ways you can find out more information:



Visit our project website at:  
[www.northwalesconnection.com](http://www.northwalesconnection.com)



Send an email to:  
[nationalgrid@northwalesconnection.com](mailto:nationalgrid@northwalesconnection.com)



Write to our freepost address at:  
**FREEPOST NATIONAL GRID NW CONNECTION**



Call our freephone number:  
0800 990 3567 9am-5pm Monday-Friday  
or leave a message outside these hours



Register for text alerts:  
Text NGCYM to 80800



Follow us on Twitter for our latest  
news and pictures: @NGNorthWales